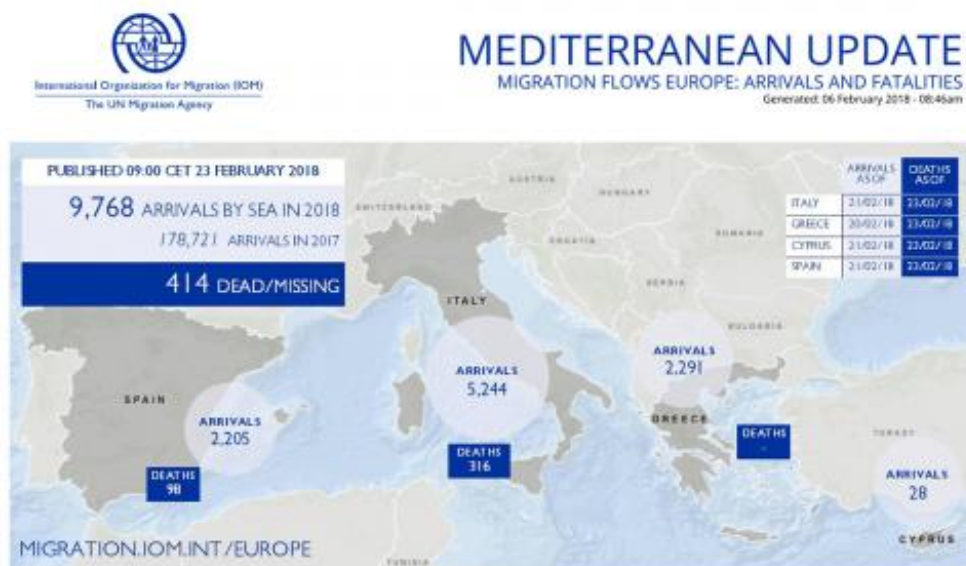


Mediterranean Migrant Arrivals Reach 9,768 in 2018; Deaths Reach 414

www.iom.int/news/mediterranean-migrant-arrivals-reach-9768-2018-deaths-reach-414



Geneva – IOM, the UN Migration Agency, reports that 9,768 migrants and refugees have entered Europe by sea through the first seven and a half weeks of 2018, with just over 53 per cent arriving in Italy and the remainder divided almost evenly between Greece and Spain. This compares with 13,799 arrivals across the region through the same period last year.

MEDITERRANEAN DEVELOPMENTS

| TOTAL ARRIVALS BY SEA AND DEATHS IN THE MEDITERRANEAN 2017-2018 | | | | |
|---|------------------------------|-----------------------------|------------------------------|-----------------------------|
| | 1 JANUARY – 21 FEBRUARY 2018 | | 1 JANUARY – 21 FEBRUARY 2017 | |
| Country of Arrival | Arrivals | Deaths | Arrivals | Deaths |
| Italy | 5,244 | 316 (Central Med. route) | 10,700 | 427 (Central Med. route) |
| Greece | 2,291 (as of 20/02) | 0 (Eastern Med. route) | 2,050 | 2 (Eastern Med. route) |
| Cyprus | 28 | | N/A | |
| Spain | 2,205 (as of 21/02) | 98 (Western Med. route) | 1,049 (as of 31/01/2017) | 39 (Western Med. route) |
| Estimated Total | 9,768 | 414 | 13,799 | 468 |

Data on deaths of migrants compiled by IOM's Global Migration Data Analysis Centre.
 All numbers are minimum estimates.
 Arrivals based on data from respective governments and IOM field offices.

On Thursday IOM Athens' Kelly Namia reported that over six days (15-20 February) the Hellenic Coast Guard reported there were at least five incidents requiring search and rescue operations off the islands of Lesbos and Samos. The Coast Guard rescued 144 migrants and transferred them to these islands.

Through 20 February, the total number of sea arrivals to Greek territory this year is 2,291

(see chart below).

| Country | 1 Jan – 31 Dec 2014 | 1 Jan – 31 Dec 2015 | 1 Jan – 31 Dec 2016 | 1 Jan – 31 Dec 2017 | 1 Jan – 20 Feb 2018 |
|---------------|------------------------|------------------------|------------------------|------------------------|------------------------|
| Greece | 34,442 | 853,650 | 173,614 | 29,501 | 2,291 |

* Unofficial data collected by IOM Greece and the Greek authorities of arrivals by sea.

IOM Spain's Ana Dodevska reported that total arrivals by sea in 2018 have reached 2,205 men, women and children who have been rescued in Western Mediterranean waters through 22 February. That figure is 621 greater than all of the arrivals through the first two months of 2017, and 1,584 through the first two months of 2016 (see charts below).

| | 2018 | 2017 | 2016 | 2015 |
|-----------------|-------|-------|------|------|
| January | 1,400 | 1,049 | 492 | 264 |
| February | 805 | 535 | 222 | 44 |

| | 2018 | 2017 | DIF. | % |
|-----------------|-------|-------|------|----|
| January | 1,400 | 1,049 | 351 | 33 |
| February | 805 | 535 | 270 | 50 |

IOM Rome's Flavio Di Giacomo said Thursday that according to Ministry of Interior figures, 5,244 migrants have arrived by sea to Italy this year – or 51 per cent fewer than last year during the same period.

With a week remaining in the month, arrivals in Italy are well below those for the previous two Februaries of 2017 and 2016 (see chart below).

| | 2018 | 2017 | 2016 |
|-----------------|---------------------|-------|-------|
| January | 4,182 | 4,468 | 5,273 |
| February | 1,062 (as of 21/02) | 8,971 | 3,828 |

On Thursday IOM's Missing Migrants Project (MMP) reported 414 deaths have been registered on the Mediterranean so far this year, fewer than the 468 reported at this time in 2017.

Most recently, two deaths were recorded on the Western Mediterranean route between Algeria and Spain. The remains of two migrants were found near Bouzedjar beach in Ain Témouchent, Algeria, on 18 February.

This year, at least 20 people have died trying to reach Spain from the coasts of Algeria. In the Central Mediterranean, the remains of one migrant were found in Awlad Sukr, east of Al Khums, Libya on 19 February.

Worldwide, IOM's Missing Migrants Project has recorded 644 fatalities during migration in 2018, compared with 890 through 21 February last year (see chart below).

In the Horn of Africa, a 20-year-old Ethiopian man drowned off the coast of Brom Mayfa in Yemen on 21 February. The MMP team recorded three deaths in Central America on 21 February: two men and one woman died in a vehicle accident in San Blas Atempa, Oaxaca, Mexico, as they were travelling north to the border with the United States.

MMP data are compiled by IOM staff but come from a variety of sources, some of which are unofficial. To learn more about how data on missing migrants are collected, click [here](#).

Latest Mediterranean Update infographic [here](#)

For latest arrivals and fatalities in the Mediterranean, please visit:

<http://migration.iom.int/europe>

Learn more about the Missing Migrants Project at: [Missing Migrants Project](#)

For more information, please contact:

Joel Millman at IOM HQ, Tel: +41 79 103 8720, Email: jmillman@iom.int

Mircea Mocanu, IOM Romania, Tel: +40212115657, Email: mmocanu@iom.int

Dimitrios Tsagalas, IOM Cyprus, Tel: + 22 77 22 70, Email: dtsagalas@iom.int

Flavio Di Giacomo, IOM Coordination Office for the Mediterranean, Italy, Tel: +39 347 089 8996, Email: fdigiaco@iom.int

Hicham Hasnaoui, IOM Morocco, Tel: + 212 5 37 65 28 81, Email: hhasnaoui@iom.int

Kelly Namia, IOM Greece, Tel: +30 210 991 2174, Email: knamia@iom.int

Julia Black, IOM GMDAC, Tel: +49 30 278 778 27, Email: jblack@iom.int

Christine Petré, IOM Libya, Tel: +216 29 240 448, Email: chpetre@iom.int

Ana Dodevska, IOM Spain, Tel: +34 91 445 7116, Email: adodevska@iom.int

Myriam Chabbi, IOM Tunisia, Tel: +216 71 860 312 ext. 109, Mobile: +216 28 78 78 05, Email: mchabbi@iom.int

| Global Migrant Deaths Jan 1 – Feb 21 (Source: Missing Migrants Project) | | |
|---|------------|------------|
| REGION | 2018 | 2017 |
| Mediterranean | 414 | 468 |
| Europe | 7 | 10 |
| Middle East | 24 | 13 |
| North Africa | 27 | 155 |
| Horn of Africa | 56 | 28 |
| Sub-Saharan Africa | 9 | 12 |
| Central Asia | 52 | - |
| Southeast Asia | 4 | 44 |
| South Asia | - | - |
| East Asia | - | - |
| North America | - | - |
| US/Mexico border | 23 | 67 |
| Central America | 7 | 10 |
| Caribbean | 18 | 83 |
| South America | 3 | - |
| TOTAL | 644 | 890 |