

Tuberculosis profile: Philippines

Population 2019: 108 million

Estimates of TB burden*, 2019

	Number	(Rate per 100 000 population)
Total TB incidence	599 000 (336 000-936 000)	554 (311-866)
HIV-positive TB incidence	11 000 (4 700-21 000)	11 (4.3-19)
MDR/RR-TB incidence**	21 000 (10 000-34 000)	19 (9.6-32)
HIV-negative TB mortality	27 000 (23 000-31 000)	25 (22-29)
HIV-positive TB mortality	810 (0-4 400)	0.75 (0-4)

Estimated proportion of TB cases with MDR/RR-TB*, 2019

New cases	1.8% (1.3-2.6)
Previously treated cases	28% (27-29)

Universal health coverage and social protection*

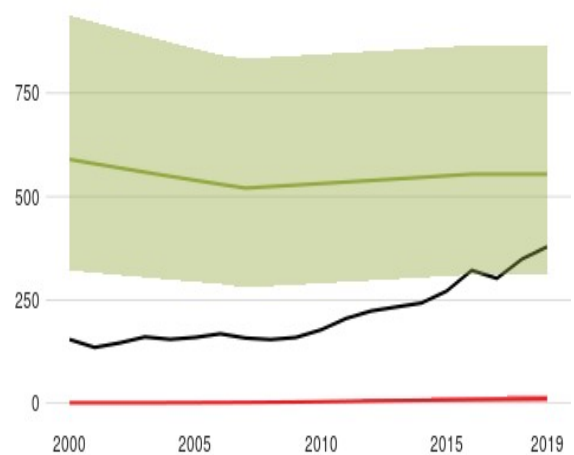
TB treatment coverage (notified/estimated incidence), 2019	68% (44-120)
TB patients facing catastrophic total costs, 2017	35% (33-37)
TB case fatality ratio (estimated mortality/estimated incidence), 2019	5% (3-8)

TB case notifications, 2019

Total new and relapse	409 167
- % tested with rapid diagnostics at time of diagnosis	37%
- % with known HIV status	33%
- % pulmonary	98%
- % bacteriologically confirmed ^	34%
- % children aged 0-14 years	10%

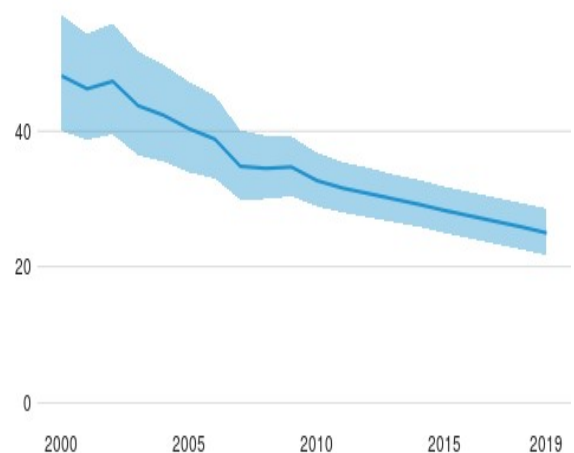
Incidence, New and relapse TB cases notified, HIV-positive TB incidence

(Rate per 100 000 population per year)



HIV-negative TB mortality

(Rate per 100 000 population per year)



Incidence, Notified cases by age group and sex, 2019

(Number)

- % women	31%
- % men	59%
Total cases notified	419 102

TB/HIV care in new and relapse TB patients, 2019

	Number	(%)
Patients with known HIV status who are HIV-positive	1 615	1.2%
- on antiretroviral therapy	1 509	93%

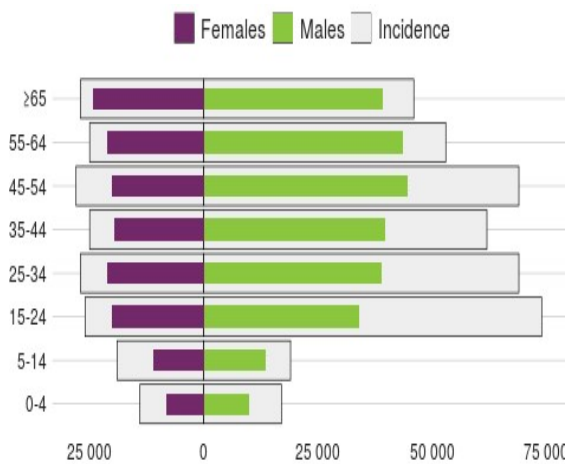
Drug-resistant TB care, 2019

% of bacteriologically confirmed TB cases tested for rifampicin resistance - New cases ^	57%
% of bacteriologically confirmed TB cases tested for rifampicin resistance - Previously treated cases ^	89%
Laboratory-confirmed cases - MDR/RR-TB ^^	7 492
Patients started on treatment - MDR/RR-TB ^^^	6 169
Laboratory-confirmed cases - XDR-TB ^^	81
Patients started on treatment - XDR-TB ^^^	82
MDR/RR-TB cases tested for resistance to any fluoroquinolone	1 536

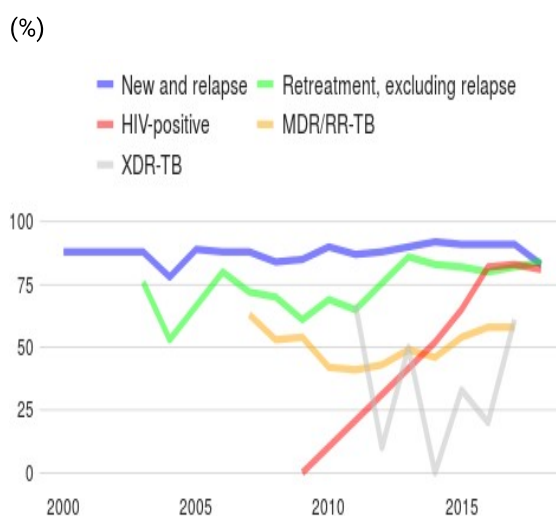
Treatment success rate and cohort size

	Success	Cohort
New and relapse cases registered in 2018	83%	369 442
Previously treated cases, excluding relapse, registered in 2018	84%	8 809
HIV-positive TB cases registered in 2018	81%	1 447
MDR/RR-TB cases started on second-line treatment in 2017	58%	5 421
XDR-TB cases started on second-line treatment in 2017	61%	18

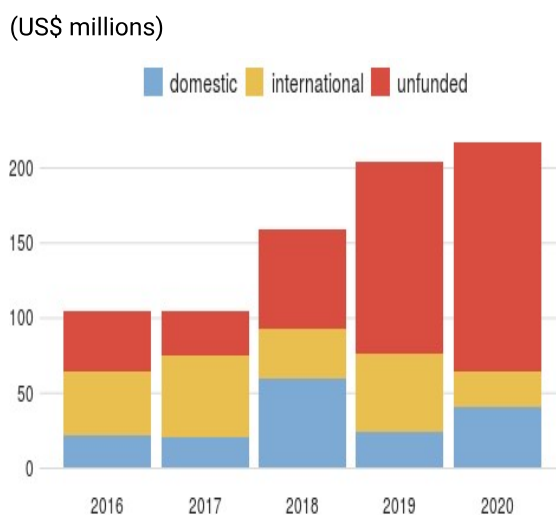
TB preventive treatment, 2019



Treatment success rate



Total budget



% of HIV-positive people (newly enrolled in care) on preventive treatment	54%
% of children (aged < 5) household contacts of bacteriologically-confirmed TB cases on preventive treatment	3.4% (3.1-3.7)

TB financing

National TB budget, 2020 (US\$ millions)	217
- Funding source, domestic	18%
- Funding source, international	11%
- unfunded	70%

* Estimates of TB and MDR-TB burden are produced by WHO in consultation with countries. Ranges represent uncertainty intervals.

** MDR is TB resistant to rifampicin and isoniazid; RR is TB resistant to rifampicin

^ Calculated for pulmonary cases only

^^ Includes cases with unknown previous TB treatment history

^^^ Includes patients diagnosed before 2019 and patients who were not laboratory-confirmed

Generated 2020-10-15 by the World Health Organization (<https://www.who.int/tb/data/>)