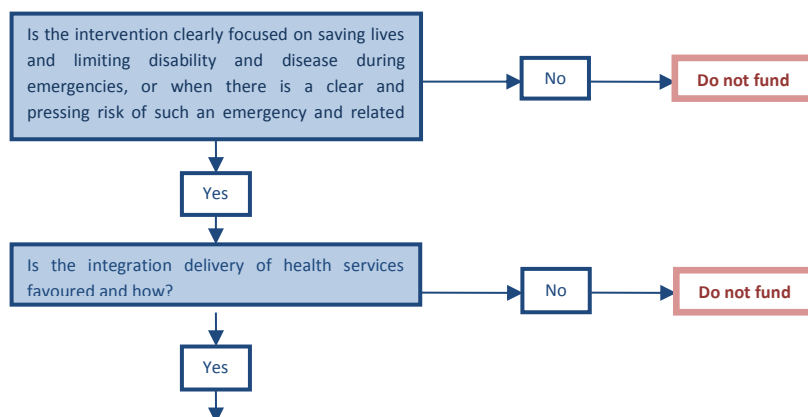


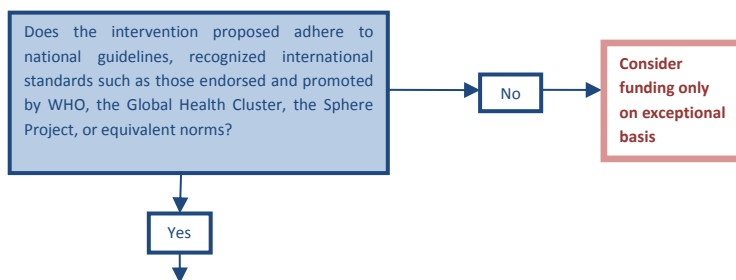
Annex A.

Concise Indicative Decision Tree for Emergencies

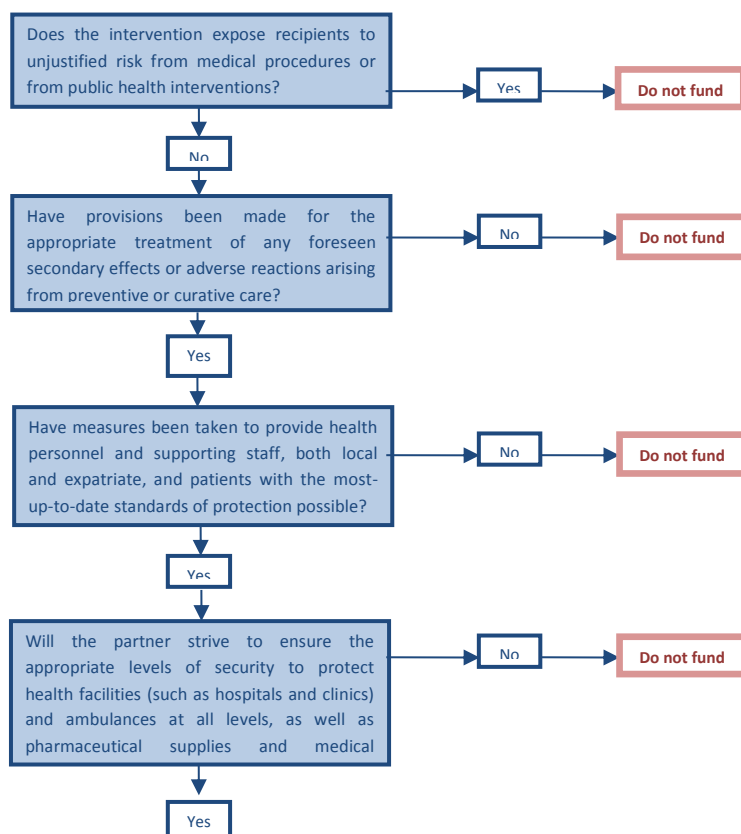
1) Does Proposal Respond to Needs?



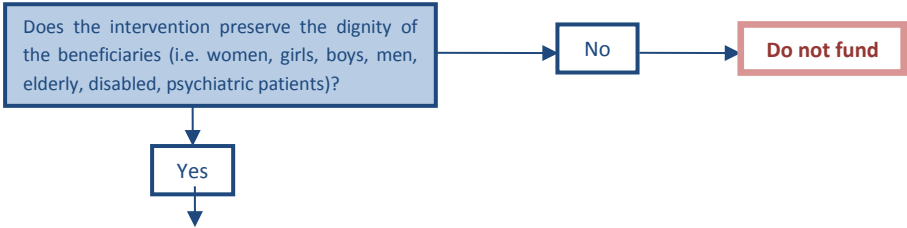
2) Does Proposal Adhere to Standards?



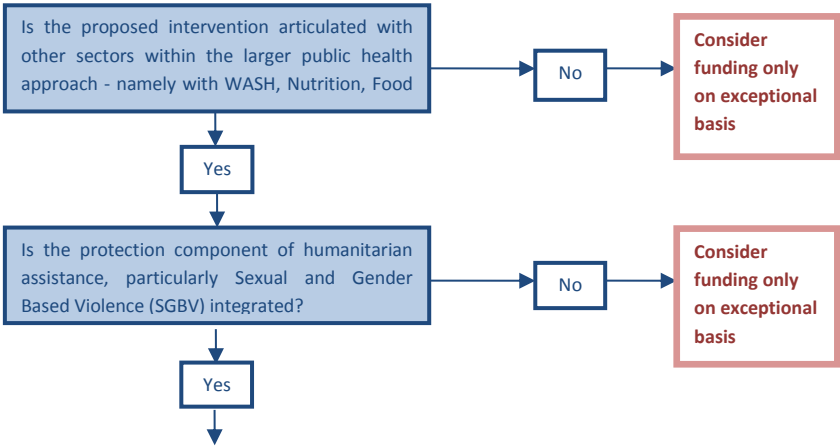
3) Does Proposal Do No Harm?



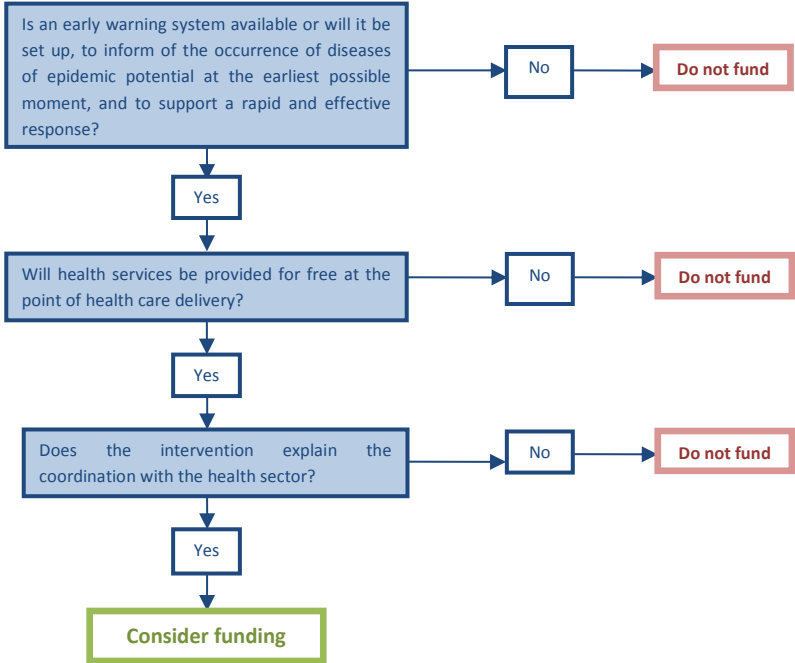
4) Does Proposal Have Beneficiary Participation?



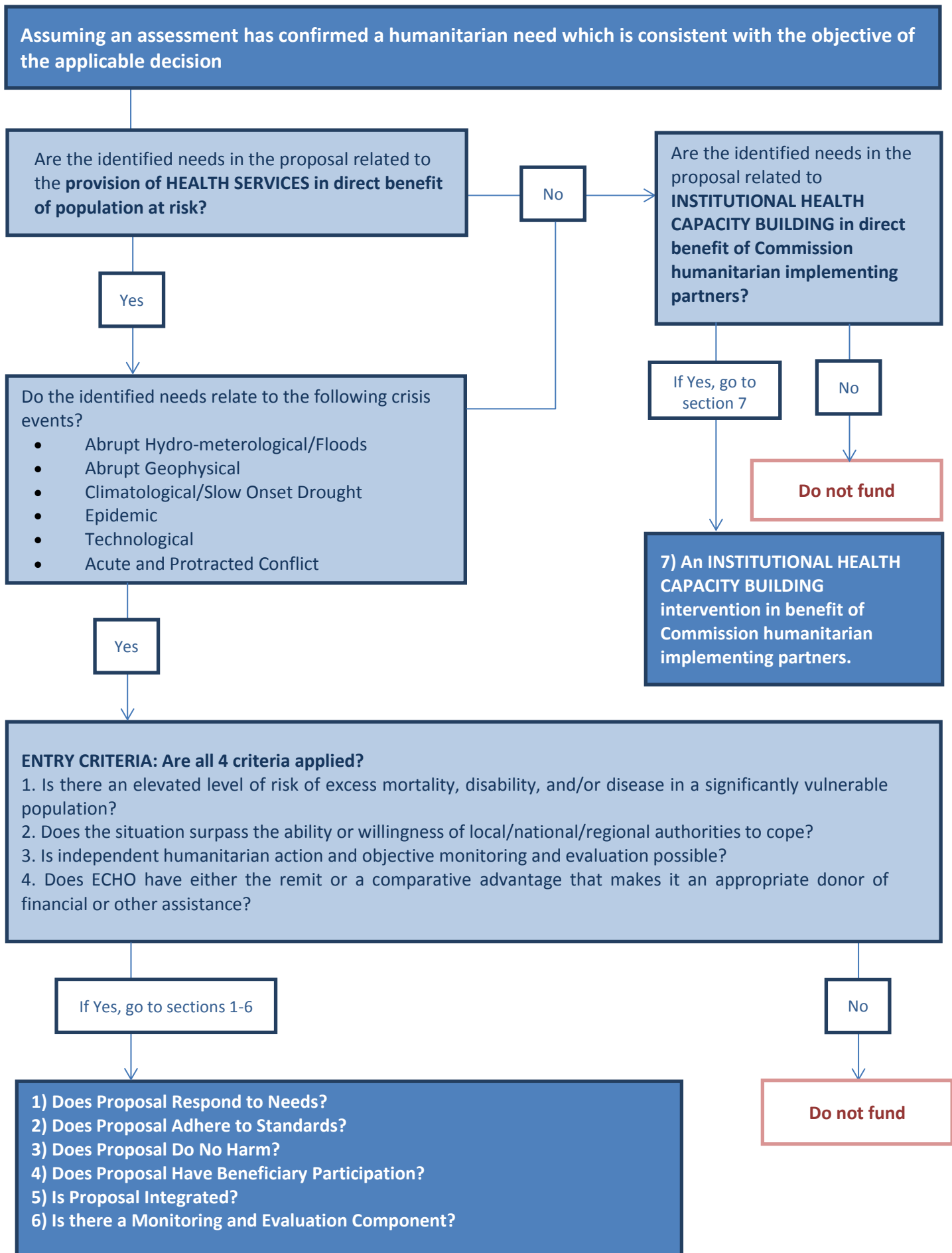
5) Is Proposal Integrated?



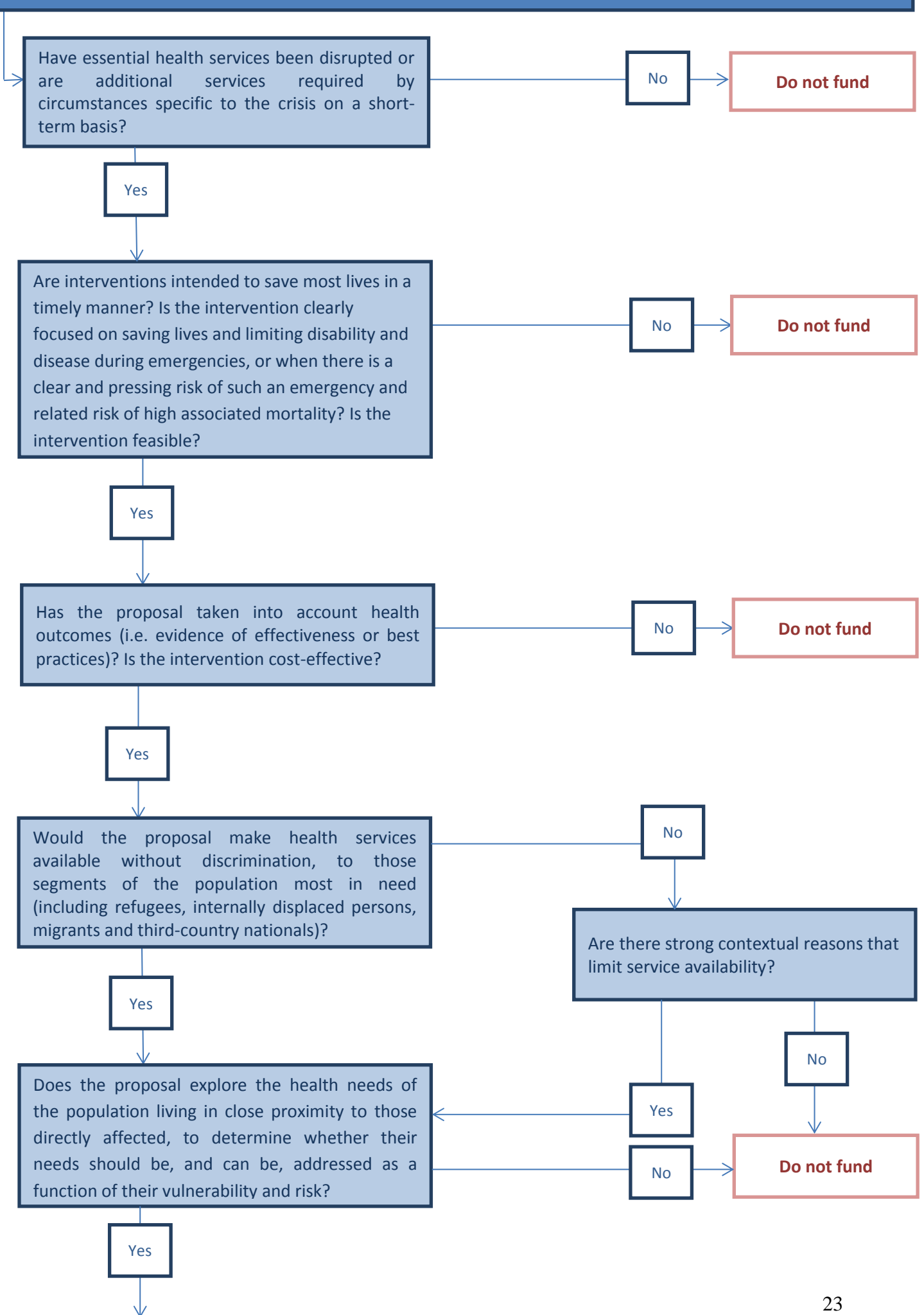
6) Is there a Monitoring and Evaluation Component?

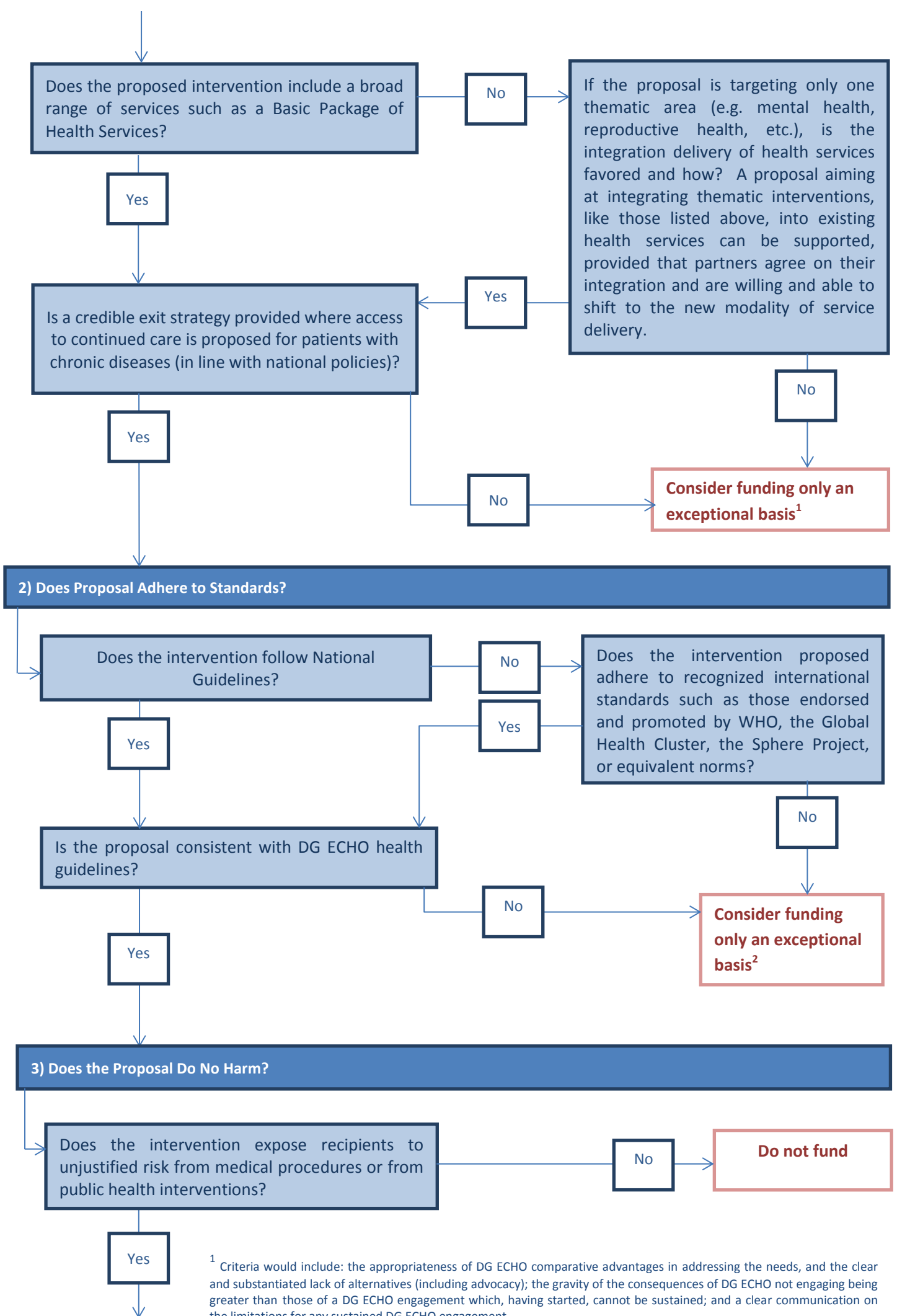


FULL INDICATIVE DECISION TREE



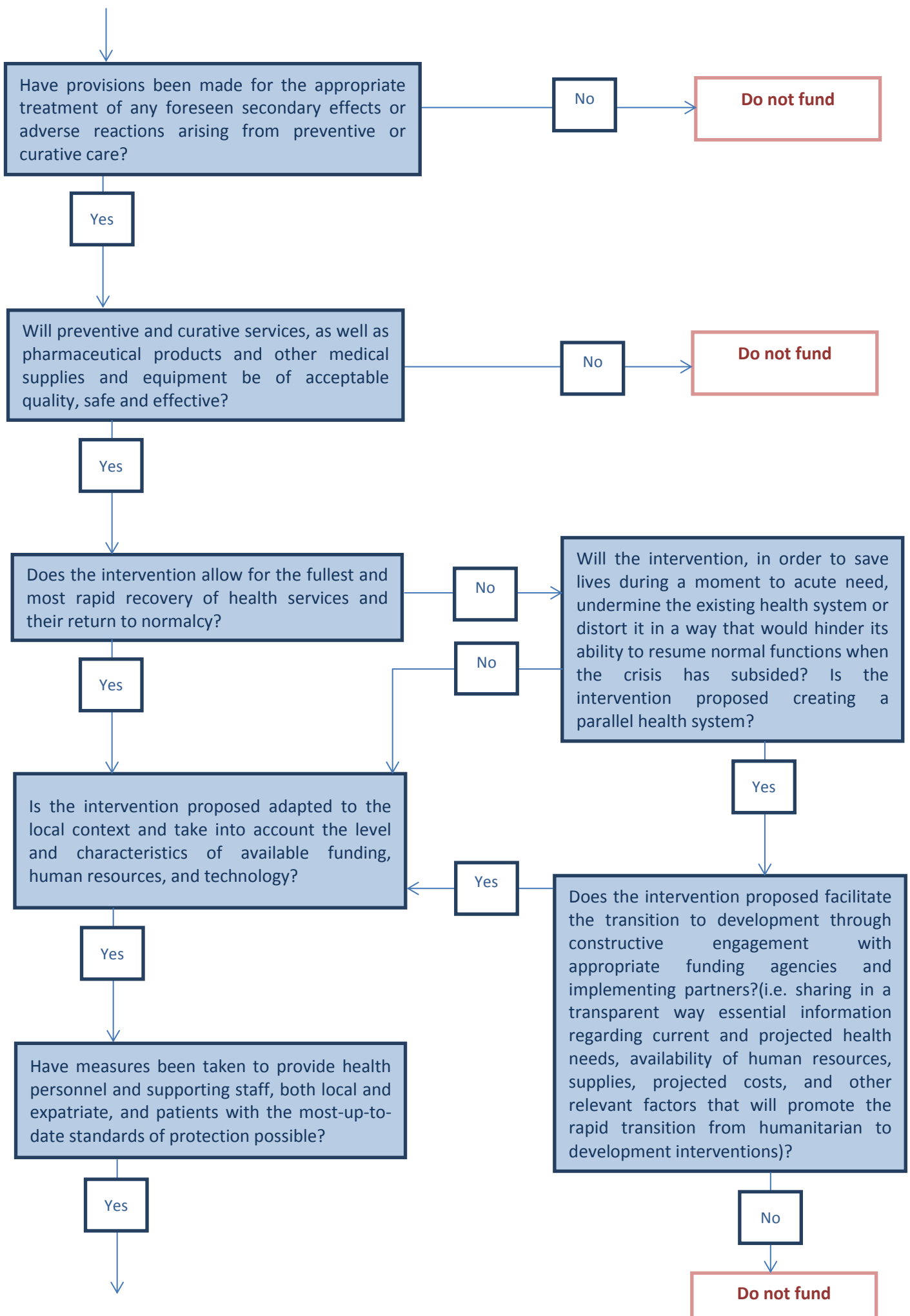
1) Does Proposal Respond to Needs?

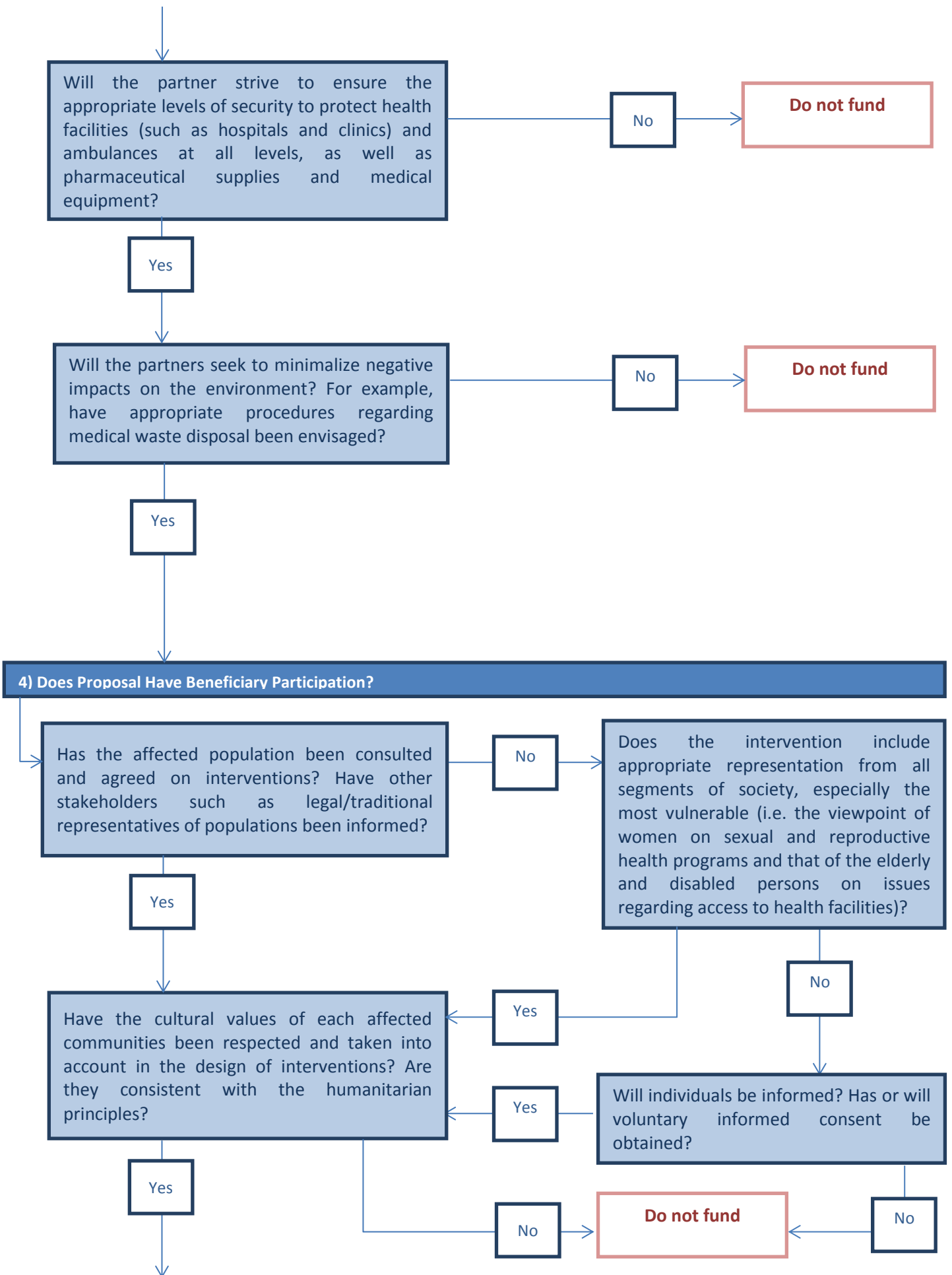


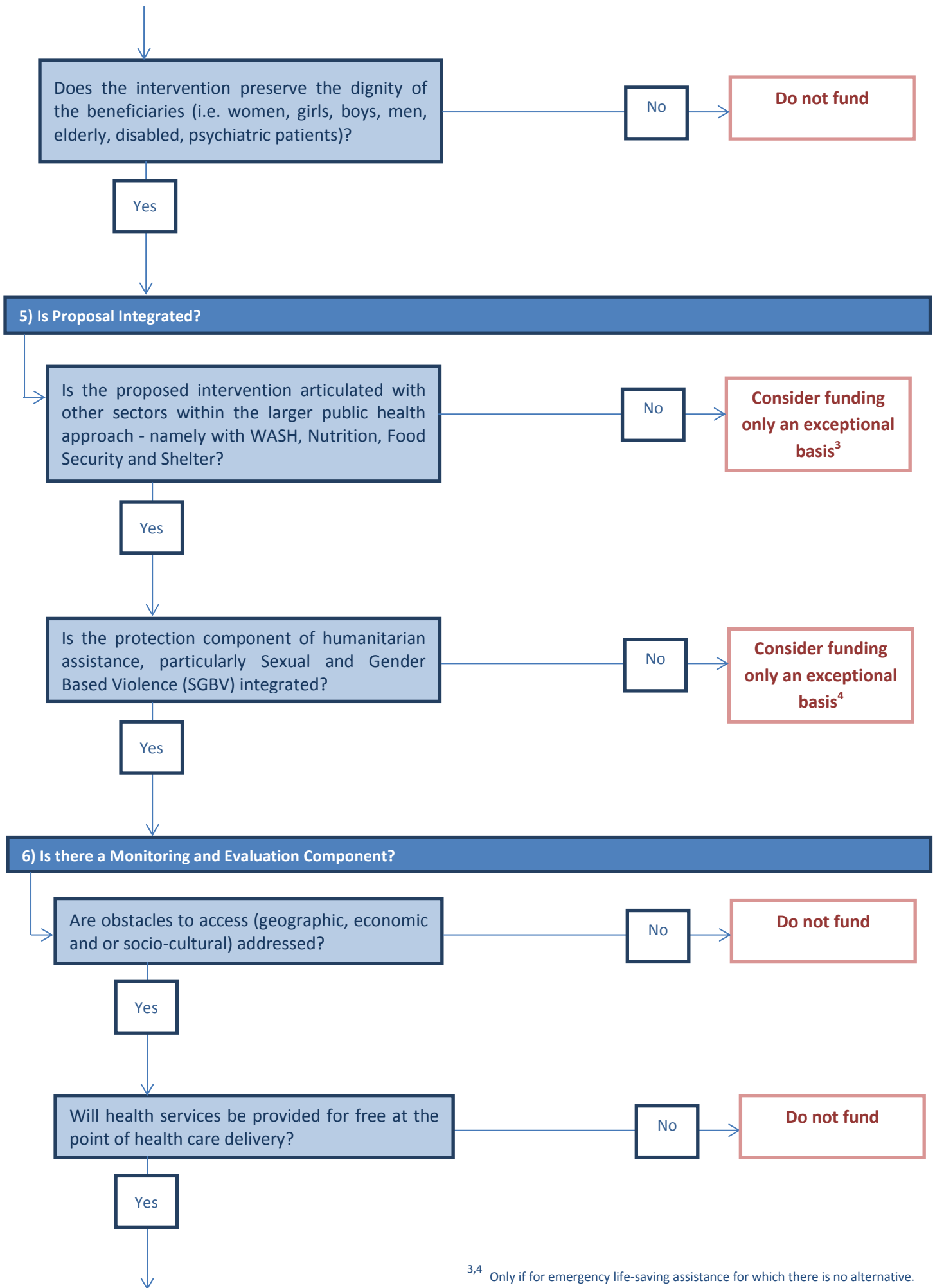


¹ Criteria would include: the appropriateness of DG ECHO comparative advantages in addressing the needs, and the clear and substantiated lack of alternatives (including advocacy); the gravity of the consequences of DG ECHO not engaging being greater than those of a DG ECHO engagement which, having started, cannot be sustained; and a clear communication on the limitations for any sustained DG ECHO engagement.

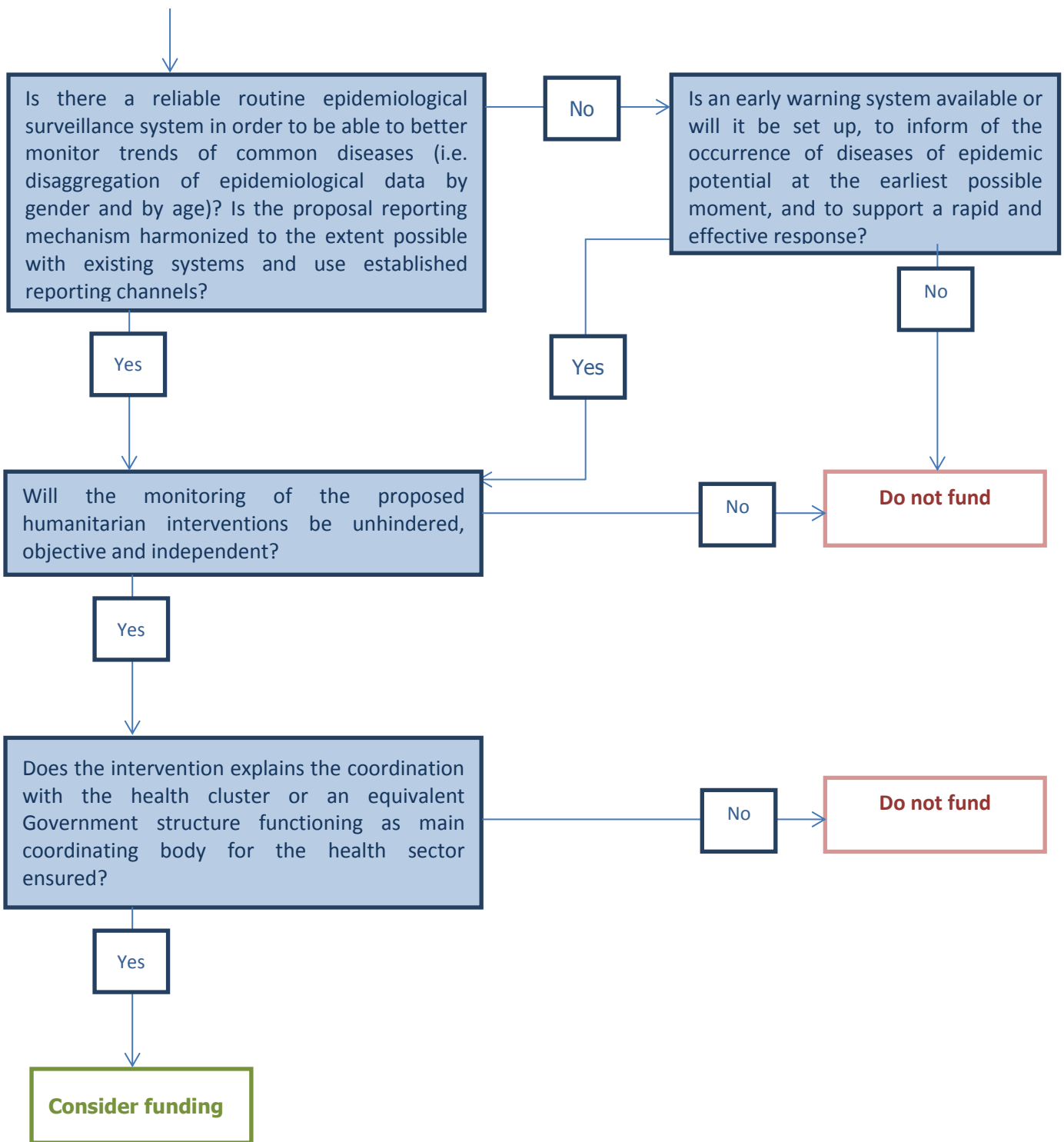
² For example a specific and detailed context related justification.







^{3,4} Only if for emergency life-saving assistance for which there is no alternative.



7) An INSTITUTIONAL HEALTH CAPACITY BUILDING intervention in benefit of Commission humanitarian implementing partners.

